

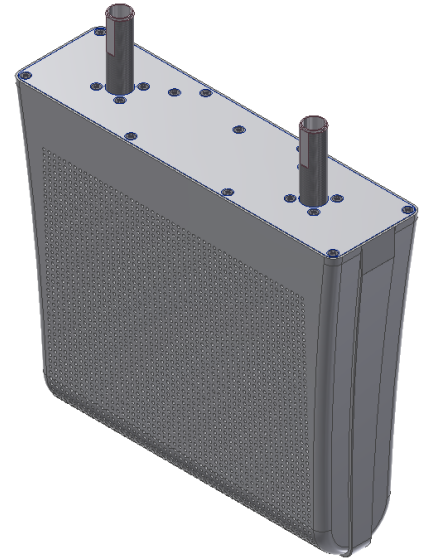
3.5GHz Patch Antenna

3350~3900 MHz / 16dBi

P-0T02XT-0016-K

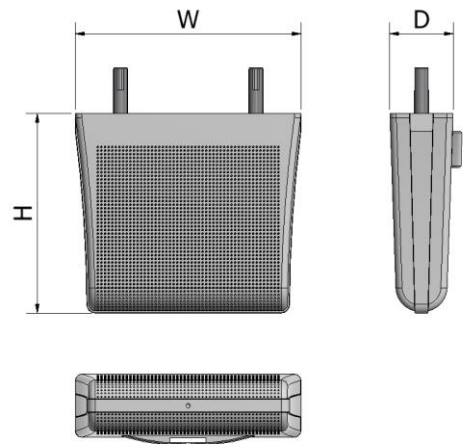
i. Electrical Specification

항 목		Patch Antenna
Frequency Range (MHz)		3350~3900
Polarization		$\pm 45^\circ$
Band Width		550 MHz
E-Tilt		-10°
Gain		≥ 16 dBi
Beam width	Horizontal	$21 \pm 5^\circ$
	Vertical	$21 \pm 5^\circ$
F-B ratio		≥ 20 dB
VSWR		$\leq 1.5 : 1$
PIMD (@2x37dBm)		3 rd : ≤ -140 5 th : ≤ -160
Impedance		50 Ω
Isolation		≥ 20 dB
Maximum input power		200 W

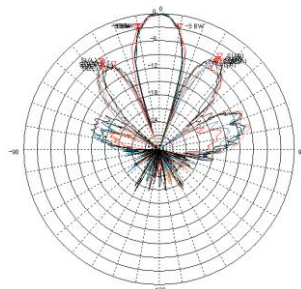


ii. Mechanical Specification

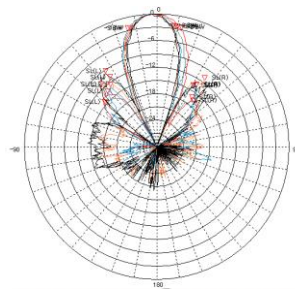
Radom Dimension (HxWxD)	230 x 255 x 75 mm
Weight (Exclude bracket)	≤ 4 Kg
Connector Type	N-J (Female) $\times 2$
Radome Color	White
Mechanical Down Tilt	Option
Temperature	$-30^\circ\text{C} \sim 60^\circ\text{C}$



iii. Radiation Pattern



Horizontal Pattern



Vertical Pattern